

Endu[®]Combi RD^{OS}

REGIONAL DRIVE

The Endu[®]Combi RD^{OS} is a long-wearing regional open shoulder drive tire.

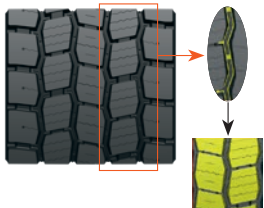


Copyright © 2025 Apollo Tires

M + S

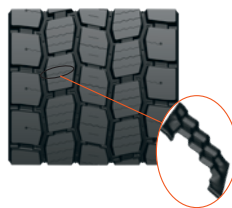


IMPROVED TIRE MILEAGE



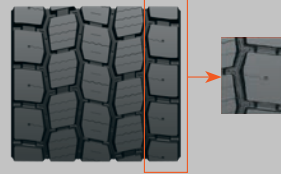
Zig-zag grooves & well staggered blocks aids to even load distribution in tire foot print.

3D SIPES FOR IMPROVED PERFORMANCE



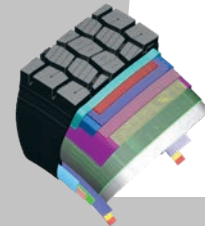
- Deep 3D sipes provide excellent traction throughout the tread life.
- Zig-Zag groove walls provide optimized biting edges for excellent traction in all seasonal conditions.

IMPROVED TRACTION



Staggered blocks with tie bars in the shoulder improves the block rigidity along with added traction.

MULTIPLE RETREADS



Robust construction with optimized belt package.

PRODUCT CODE	SIZE	LI/SS	PLY RATING/LOAD RANGE	SECTION WIDTH (INCH)	OVERALL DIAMETER (INCH)	TIRE WEIGHT LBS	ORIGINAL TREAD DEPTH (1/32")	STATIC LOADED RADIUS (INCH)	RECOMMENDED RIM WIDTH (INCH)	ALTERNATE RIM WIDTH (INCH)	ROLLING CIRCUMFERENCE (INCH)	REVS/MILE	LOAD DETAILS (LBS)	
													SINGLE	DUAL
2021356	295/75R22.5	144/141/L	14/G	11.5	40.4	138	25	18.7	9.00	8.25	121.8	510	6175 lbs @ 110 psi	5675 lbs @ 110 psi
2021355	295/75R22.5	149/146/L	16/H	11.5	40.4	138	25	18.7	9.00	8.25	121.8	510	7160 lbs @ 123 psi	6610 lbs @ 123 psi
2021354	11R22.5	144/142/L	14/G	11.1	41.4	139	25	19.3	8.25	7.50	126.1	498	6175 lbs @ 105 psi	5840 lbs @ 105 psi
2021353	11R22.5	146/143/L	16/H	11.1	41.4	139	25	19.3	8.25	7.50	126.1	498	6610 lbs @ 120 psi	6005 lbs @ 120 psi
2021358	11R24.5	146/143/L	14/G	11.2	43.5	148	24	20.2	8.25	7.50	132.6	473	6610 lbs @ 105 psi	6005 lbs @ 105 psi
2021357	11R24.5	149/146/L	16/H	11.2	43.5	148	24	20.2	8.25	7.50	132.6	473	7160 lbs @ 120 psi	6610 lbs @ 120 psi