

Endu[®]Trax MD

MIXED SERVICE DRIVE

The Endu[®]Trax MD, specifically designed for mixed service usage is a robust drive tire with outstanding traction and high impact resistance.

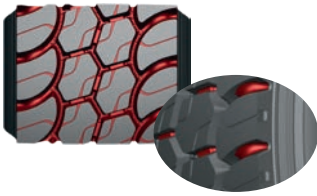


Copyright © 2025 Apollo Tires

M + S

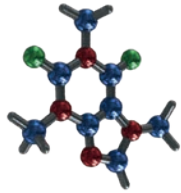


EXCELLENT TRACTION IN ALL CONDITIONS



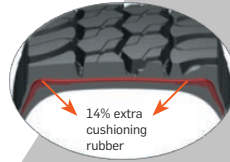
Cap shaped tie bars allow tires to self clean for improved traction and stability.

CUT AND CHIP RESISTANCE



Advanced cut/chip resistant compound providing exceptional durability in all terrains.

MULTIPLE RETREADS



Additional 14% cushioning rubber including stone ejectors for improved impact resistance and reduced stone drilling.

PRODUCT CODE	SIZE	LI/SS	PLY RATING/LOAD RANGE	SECTION WIDTH (INCH)	OVERALL DIAMETER (INCH)	TIRE WEIGHT LBS	ORIGINAL TREAD DEPTH (1/32")	STATIC LOADED RADIUS (INCH)	RECOMMENDED RIM WIDTH (INCH)	ALTERNATE RIM WIDTH (INCH)	ROLLING CIRCUMFERENCE (INCH)	REVS / MILE	LOAD DETAILS (LBS)	
													SINGLE	DUAL
2023855	12R22.5	152/148/L	16/H	11.9	43.3	152	29	20.1	9.00	8.25	130.2	481	7830 lbs @ 123 psi	6940 lbs @ 123 psi
2021850	315/80R22.5	157/154/K	20/L	12.3	43.1	168	30	19.7	9.00	9.75	129.2	482	9090 lbs @ 130 psi	8270 lbs @ 130 psi