

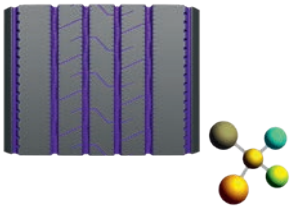
Endu[®]Mile LHfront

LONGHAUL STEER

A longhaul steer tire capable of delivering high mileage and multiple retreads.

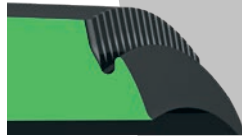


HIGH MILEAGE



Innovative tread design and cap compound offering even wear and high mileage.

DE-COUPLER GROOVE DURABILITY



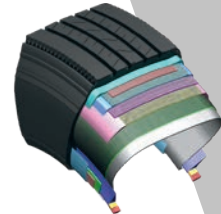
Durable de-coupler groove technology designed to minimize drop shoulder wear.

ADVANCED TREAD DESIGN



Optimized contact patch ensuring uniform wear and high mileage.

RETREADABILITY



Exceptional casing durability providing multiple retreads.

PRODUCT CODE	SIZE	LI/SS	PLY RATING/ LOAD RANGE	SEC-TION WIDTH (INCH)	OVERALL DIAMETER (INCH)	TIRE WEIGHT LBS	ORIGINAL TREAD DEPTH (1/32")	STATIC LOADED RADIUS (INCH)	RECOM-MENDED RIM WIDTH (INCH)	ALTERNATE RIM WIDTH (INCH)	ROLLING CIRCUM-FERENCE (INCH)	REVS / MILE	LOAD DETAILS (LBS)	
													SINGLE	DUAL
2023101	295/75R22.5	144/141/L	14/G	11.5	40.0	116	18	18.7	9.00	8.25	121.8	513	6175 lbs @ 110 psi	5675 lbs @ 110 psi
2023100	295/75R22.5	149/146/L	16/H	11.5	40.0	116	18	18.7	9.00	8.25	121.8	513	7160 lbs @ 123 psi	6610 lbs @ 123 psi
2023103	11R22.5	144/142/L	14/G	11.1	41.3	119	19	20.2	8.25	7.50	126.6	500	6175 lbs @ 105 PSI	5840 lbs @ 105 PSI
2023102	11R22.5	146/143/L	16/H	11.1	41.3	119	19	20.2	8.25	7.50	126.6	500	6610 lbs @ 120 PSI	6005 lbs @ 120 PSI
2023105	11R24.5	146/143/L	14/G	11.0	43.3	128	19	20.2	8.25	7.50	132.9	477	6610 lbs @ 105 psi	6005 lbs @ 105 psi
2023104	11R24.5	149/146/L	16/H	11.0	43.3	128	19	20.2	8.25	7.50	132.9	477	7160 lbs @ 120 psi	6610 lbs @ 120 psi