

Endu[®]Combi RD^{CS}

REGIONAL DRIVE

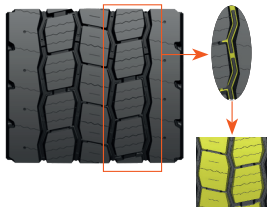
The Endu[®]Combi RD^{CS} is a long-wearing closed shoulder drive tire specifically developed for regional & super regional operations in the USA.

M + S



Copyright © 2024, Apollo Tires

IMPROVED TIRE MILEAGE



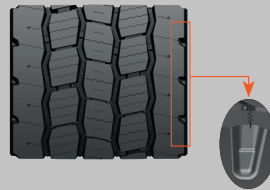
Zig-zag grooves & well staggered blocks aids to even load distribution in tire foot print.

3D SIPES FOR IMPROVED PERFORMANCE



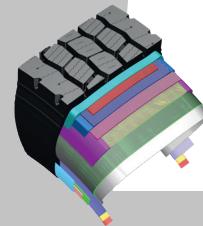
- Deep 3D sipes provide excellent traction throughout the tread life.
- Zig-Zag groove walls provide optimized biting edges for excellent traction in all seasonal conditions.

SHORTER BRAKING DISTANCE



Notches add more biting edges in tread pattern design.

MULTIPLE RETREADS



Robust construction with optimized belt package.

PRODUCT CODE	TIRE SIZE	PLY RATING	LOAD RANGE	LOAD INDEX	SPEED SYMBOL	OVERALL DIA-METER (INCH)	SECTION WIDTH (INCH)	ORIGINAL TREAD DEPTH (1/32")	STATIC LOADED RADIUS (INCH)	RECOMMENDED RIM WIDTH (INCH)	ALTERNATE RIM WIDTH (INCH)	TIRE WEIGHT		LOAD DETAILS (LBS)	
												LBS	KG	SINGLE	DUAL
2021303	295/75R22.5	14	G	144/141	L	40.4	11.5	25	18.7	9.00	8.25	137.6	62.4	6175 lbs @ 110 psi	5675 lbs @ 110 psi
2021302	295/75R22.5	16	H	149/146	L	40.4	11.5	25	18.7	9.00	8.25	137.6	62.4	7160 lbs @ 123 psi	6610 lbs @ 123 psi
2021301	11R22.5	14	G	144/142	L	41.4	11.1	25	19.3	8.25	7.50	138.7	62.9	6175 lbs @ 105 psi	5840 lbs @ 105 psi
2021300	11R22.5	16	H	146/143	L	41.4	11.1	25	19.3	8.25	7.50	138.7	62.9	6610 lbs @ 120 psi	6005 lbs @ 120 psi
2021305	11R24.5	14	G	146/143	L	43.5	11.2	24	20.2	8.25	7.50	147.5	66.9	6610 lbs @ 105 psi	6005 lbs @ 105 psi
2021304	11R24.5	16	H	149/146	L	43.5	11.2	24	20.2	8.25	7.50	147.5	66.9	7160 lbs @ 120 psi	6610 lbs @ 120 psi